



## Works Notification

July 2017

### Gold Coast Light Rail Stage 2

NIGHT TIME INTERSECTION CLOSURES – OVERHEAD WIRE INSTALLATION  
OLSEN AVENUE, WINTERGREEN DRIVE AND PARKLANDS DRIVE, PARKWOOD



Night time intersection closures are required to install light rail overhead wires across Olsen Avenue from **8.00pm to 5.00am each night from Sunday 30 July until Friday 4 August**, weather permitting.

- All vehicle movements at the intersection of Olsen Avenue, Wintergreen and Parklands Drive will be closed 8.00pm – 5.00am each night.
- Motorists should seek an alternative route.
- Vehicle access to the Gold Coast University Hospital will be maintained via Hollows Way and the Smith Street Motorway/Parklands Drive intersection (please refer to detour map overleaf).
- Vehicle access to businesses along Olsen Avenue will be maintained, including Dan Murphy's, The Parkwood Tavern, Pet Destination and the United service station.

## What to expect:

During construction, you may notice changes around your local area such as:

- Traffic control for lane closures, diversions and detours including signage to direct motorists. In the event of wet weather or unforeseen circumstances, this activity will occur on the next available night.
- Visual message boards will operate in the area to keep you informed.
- Increased noise levels and vibration from machinery, equipment and site vehicles.

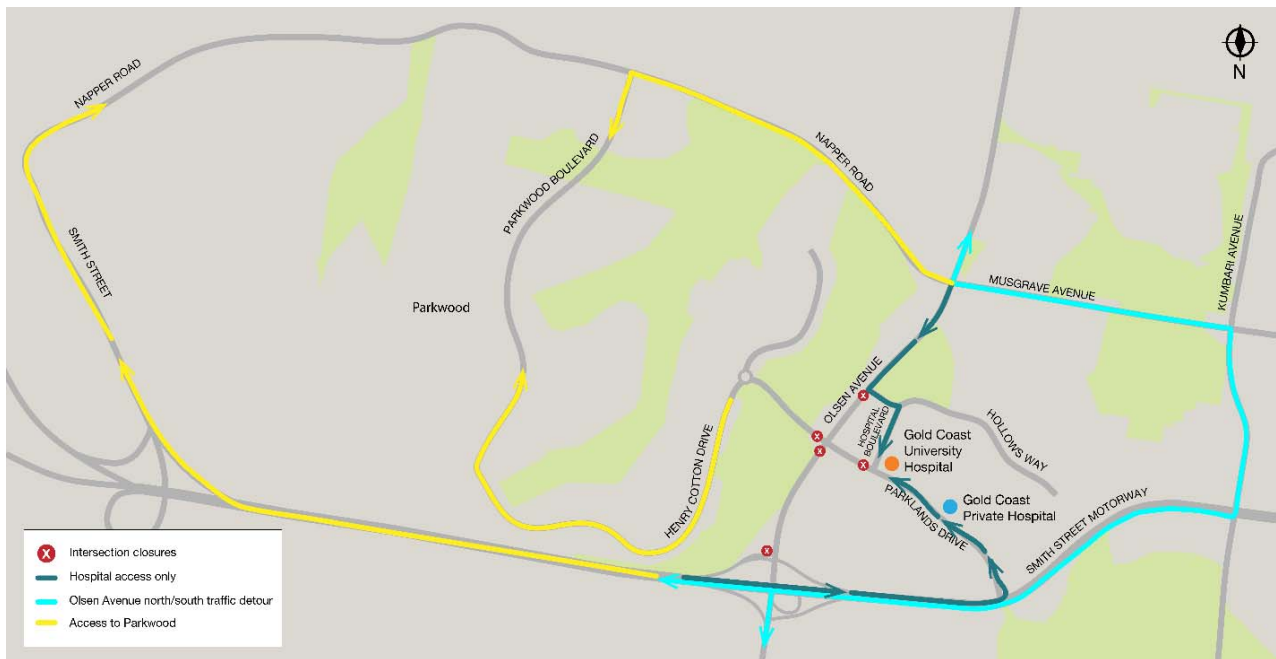
## Work will involve:

- Temporary intersection closures and detours will be in place.
- Trucks and machinery including elevated work platforms.
- Lighting towers to light the work area.

Motorists are advised to avoid the area if possible during these works and seek an alternative route as delays are expected.

We appreciate your patience during these important works and will continue to update you as work progresses.

## Detour map for access to hospital precinct and Parkwood during intersection closure



## Where can you find out more information



If you have any questions or would like to register for more information, please contact the CPB Contractors Project Team on **1800 425 799\*** or email **gclrstage2@cpbcon.com.au**. Visit **www.gclrstage2.com.au** for more information and updates.

*\* Free call within Australia. Call charges may apply from mobile or pay phones.*



Australian Government

**BUILDING OUR FUTURE**

CITY OF  
**GOLDCOAST™**

**GoldlineQ**  
Gold Coast Light Rail



Queensland Government